

# RETAIN

Retaining Employment  
and Talent After  
Injury/Illness Network

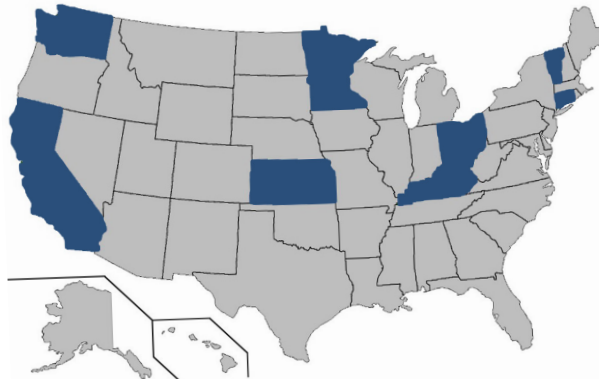
**RETAIN creates a bridge between health care providers, patients, and employers offering early intervention strategies and coordination to support working individuals after injury or illness.**

Significant numbers of American workers experience injury and illness each year, inhibiting their full participation in the workforce. Recovery rates from injury or illness improve when employees stay connected to their work communities, return to their daily roles and routines, and continue to contribute to the labor force.

## States Participating in Phase 1 of RETAIN

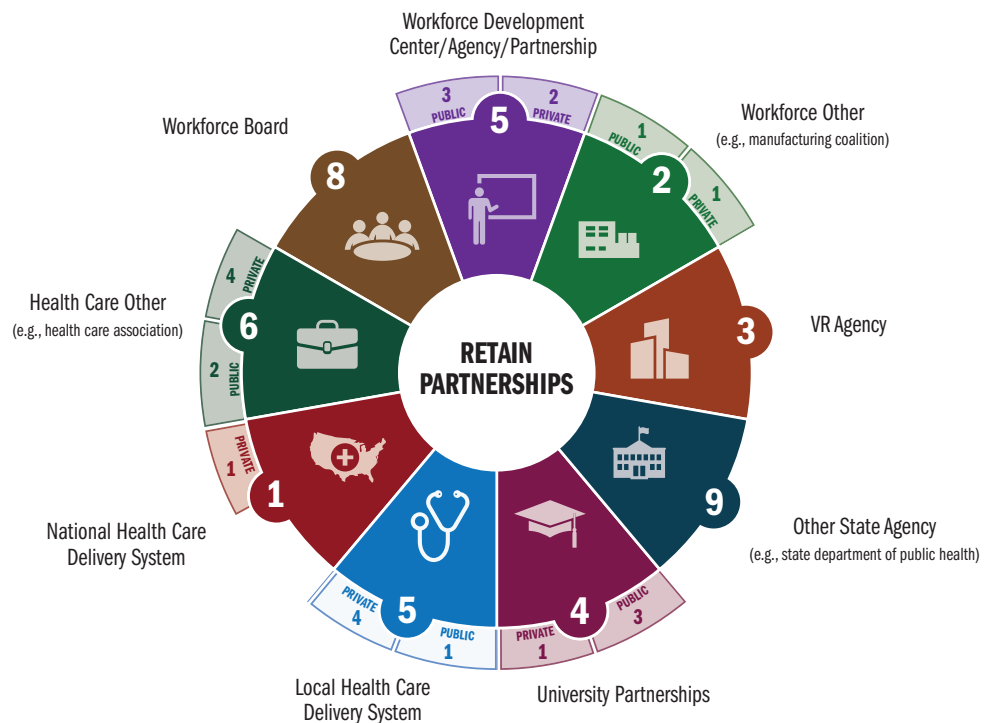
The Phase 1 RETAIN state grantees are as follows:

- ▶ California
- ▶ Connecticut
- ▶ Kansas
- ▶ Kentucky
- ▶ Minnesota
- ▶ Ohio
- ▶ Vermont
- ▶ Washington



## State Partnerships

The 8 RETAIN states have created a total of 43 formal partnerships with a variety of public and private entities as displayed in the diagram. State agencies and workforce boards represent about half of those partnerships. Six different categories of RETAIN partnerships comprise the other half. Nearly one-third of the partnerships are with private sector entities. RETAIN programs also have developed informal working relationships with other entities.



## RETAIN Program Eligibility Criteria Across States

Workers with injuries other than musculoskeletal conditions are eligible for RETAIN in six of the eight states.



### Condition that disrupted work:

**Musculoskeletal = 2** (Connecticut and Vermont)

**Musculoskeletal and other = 6** (California, Kansas, Kentucky, Minnesota, Ohio, and Washington)

In three states, individuals with work-related and non-work-related injuries qualify for RETAIN.



### Primary nature of injury for eligibility to enroll across RETAIN programs:

**Work-related = 2** (Connecticut and Vermont)

**Non-work-related = 3** (Kentucky, Ohio, and Washington)

**Both = 3** (California, Kansas, and Minnesota)

Four states permit individuals who are currently unemployed within a 12-week period to participate.



### Primary employment status for eligibility to enroll across RETAIN programs:

**Currently employed = 4** (Connecticut, Kansas, Ohio, and Washington)

**Currently employed or unemployed within a specified time frame (e.g., unemployed for the past 12 weeks) = 4** (California, Kentucky, Minnesota, and Vermont)

This communication was prepared for the U.S. Department of Labor (DOL) Office of Disability Employment Policy and Retaining Employment and Talent After Injury/Illness Network (RETAIN) state grantees, by the American Institutes for Research under DOL Contract Number 1605DC-18-F-00429. The views expressed are those of the authors and should not be attributed to DOL, nor does mention of trade names, commercial products, or organizations imply endorsement of same by the U.S. Government.