

BEHAVIORAL HEALTH AND RETAIN:

Wraparound Service or Collaborative Care?



Beth Kuhn, MILR

Stonegate Strategies

September 19, 2023

RETAIN

Retaining Employment and Talent
After Injury/Illness Network

 **AIR**[®]


ODEP
Office of Disability
Employment Policy

Today's Agenda

- Welcome and Introductions
- Terms
- Stay-at-Work (SAW) /Return-to-Work (RTW) and Behavioral Health (BH)
- Wraparound Supports
- Collaborative Care
- Group Discussion

TERMS

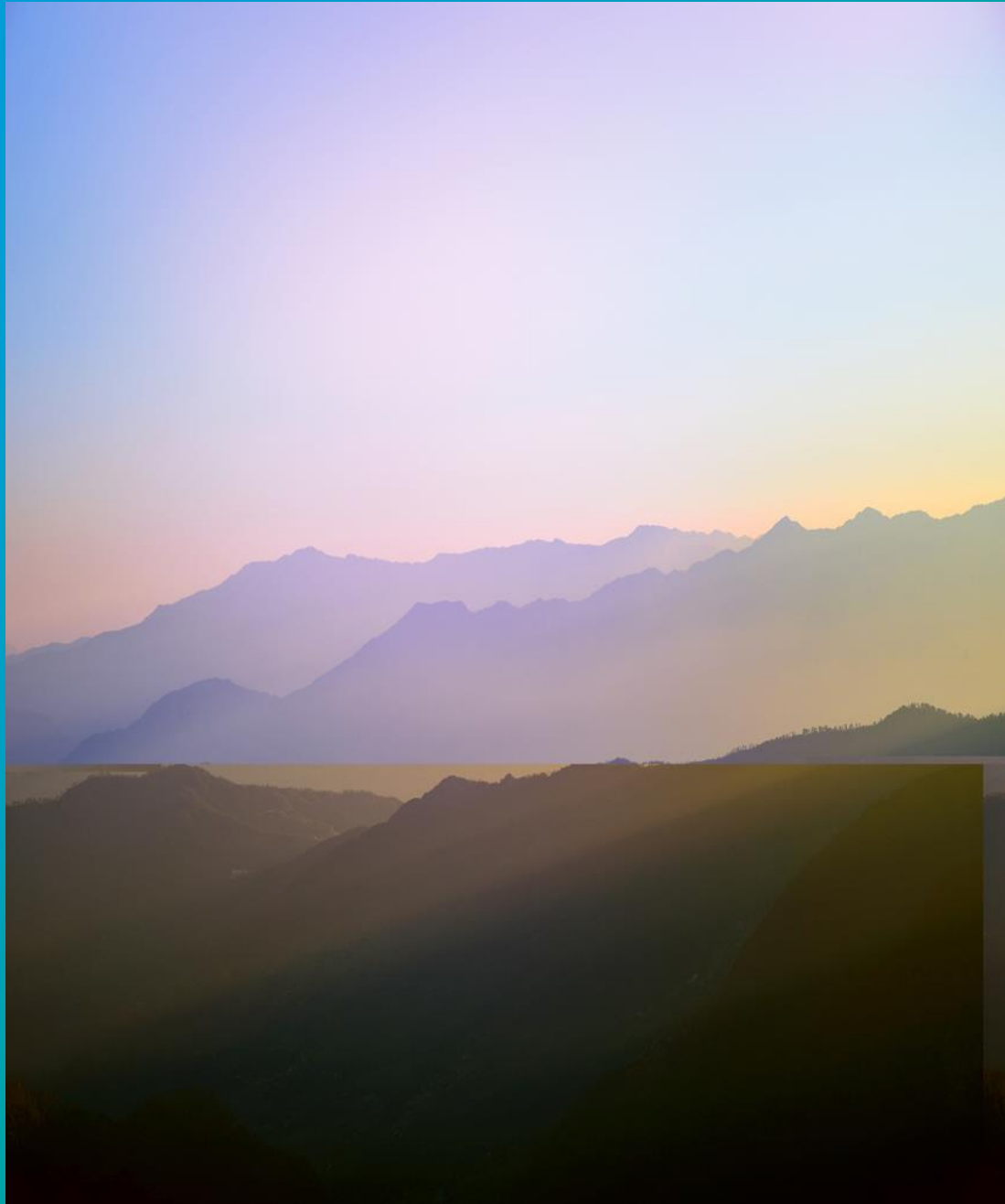
Behavioral Health AND RETAIN

RETAIN | Retaining Employment and Talent After
Injury/Illness Network

Definitions

Behavioral Health = Mental Health + Substance Use Disorder

For purposes of this session, I will use the term “behavioral health” to encompass both forms of support and intervention.



***Wraparound supports* are services or offerings from an employer that aim to stabilize the personal lives of staff through unconventional benefits.**

Leading Age

Stay-at-Work/Return to Work and Behavioral Health

Behavioral Health AND RETAIN

RETAIN | Retaining Employment and Talent After
Injury/Illness Network

SAW/RTW and BH

- Response and recovery from event/trauma
- Treatment for existing diagnosis
- New medication impact on possible SUD
- Employment “mindset?”
- And . . . ?



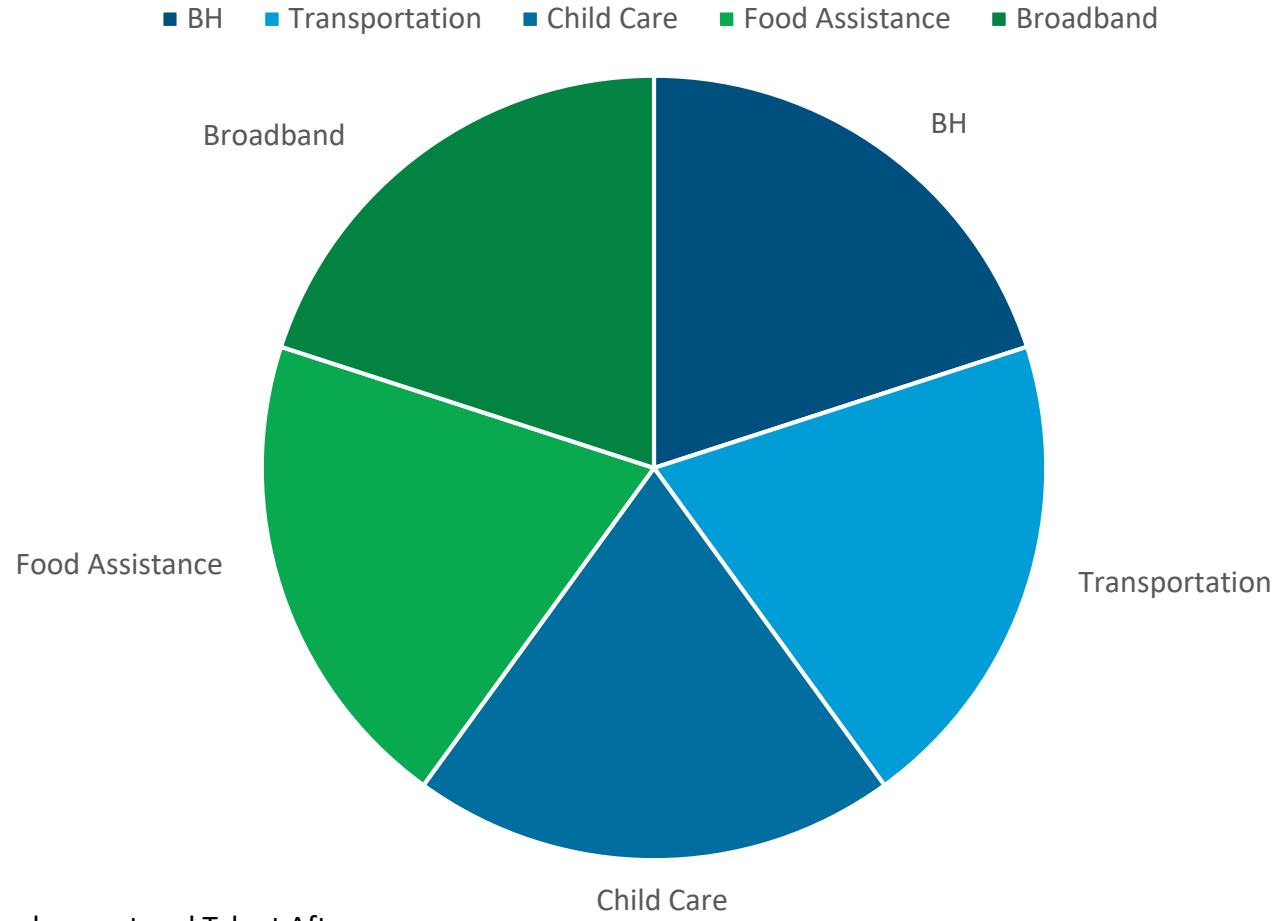
How might (increased)
behavioral health support
improve SAW/RTW
outcomes?

Wraparound Supports

Behavioral Health AND RETAIN

RETAIN | Retaining Employment and Talent After
Injury/Illness Network

Wraparound Supports



Populations and Wraparound

- Direct Caregiving Workforce
 - ✓ Leading Age
- Black Workers
 - ✓ Jobs for the Future (JFF)
- Public Workforce System Customers
 - ✓ *Towards Employment*
- All share interest in equity, improving employment rates and outcomes

Collaborative Care

Behavioral Health AND RETAIN

RETAIN | Retaining Employment and Talent After
Injury/Illness Network

SAW/RTW Intervention Pathways

- Health Care
- Public Assistance
- Unemployment Insurance
- Workers Compensation
- Private Disability Insurance
- Job Training

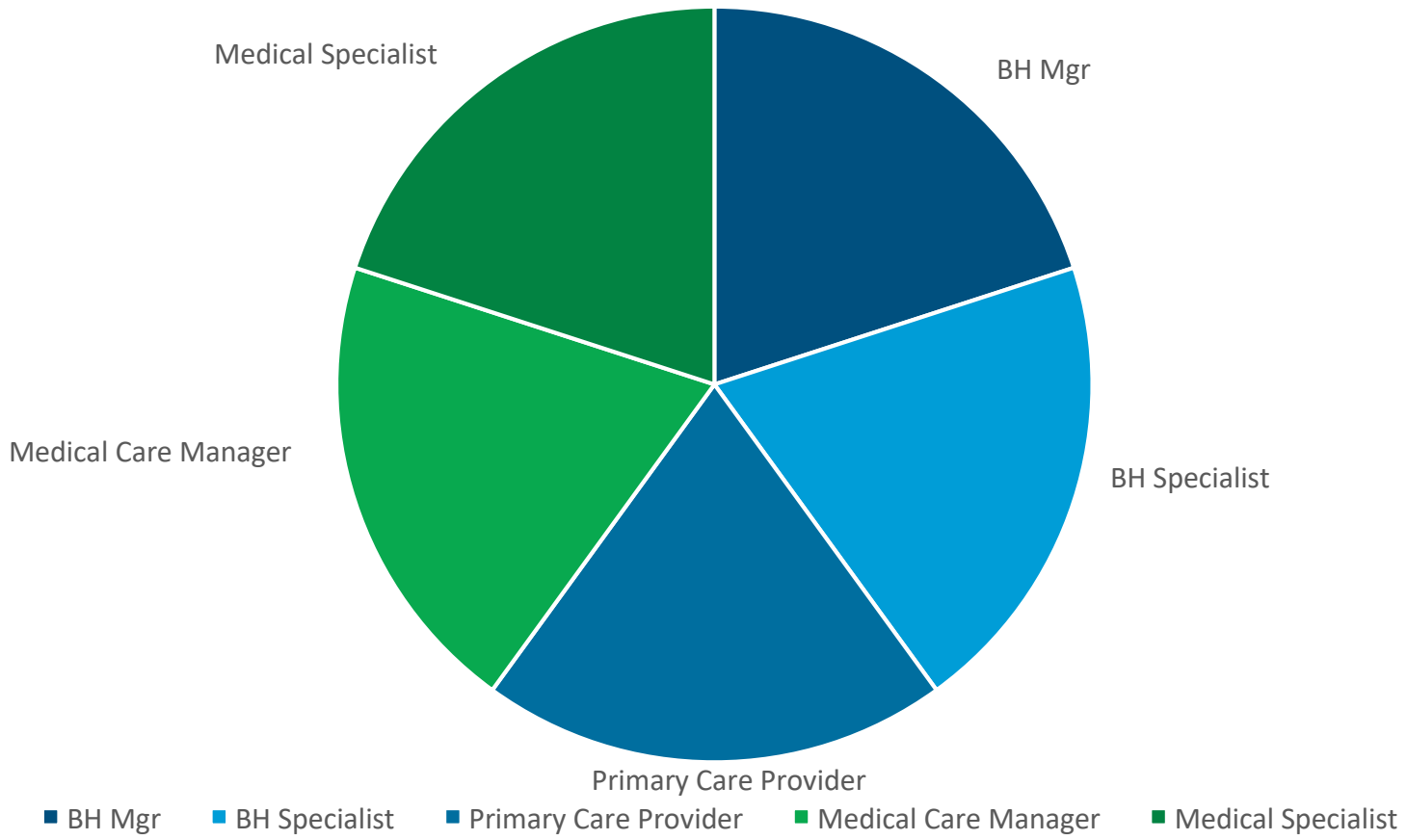
Populations and Collaborative Care

- University students
- Postpartum mothers
- Older adults
- Substance use disorders (SUDs)
- All these populations demonstrated evidence-based improvements through use of psychiatric collaborative care model (CoCM):

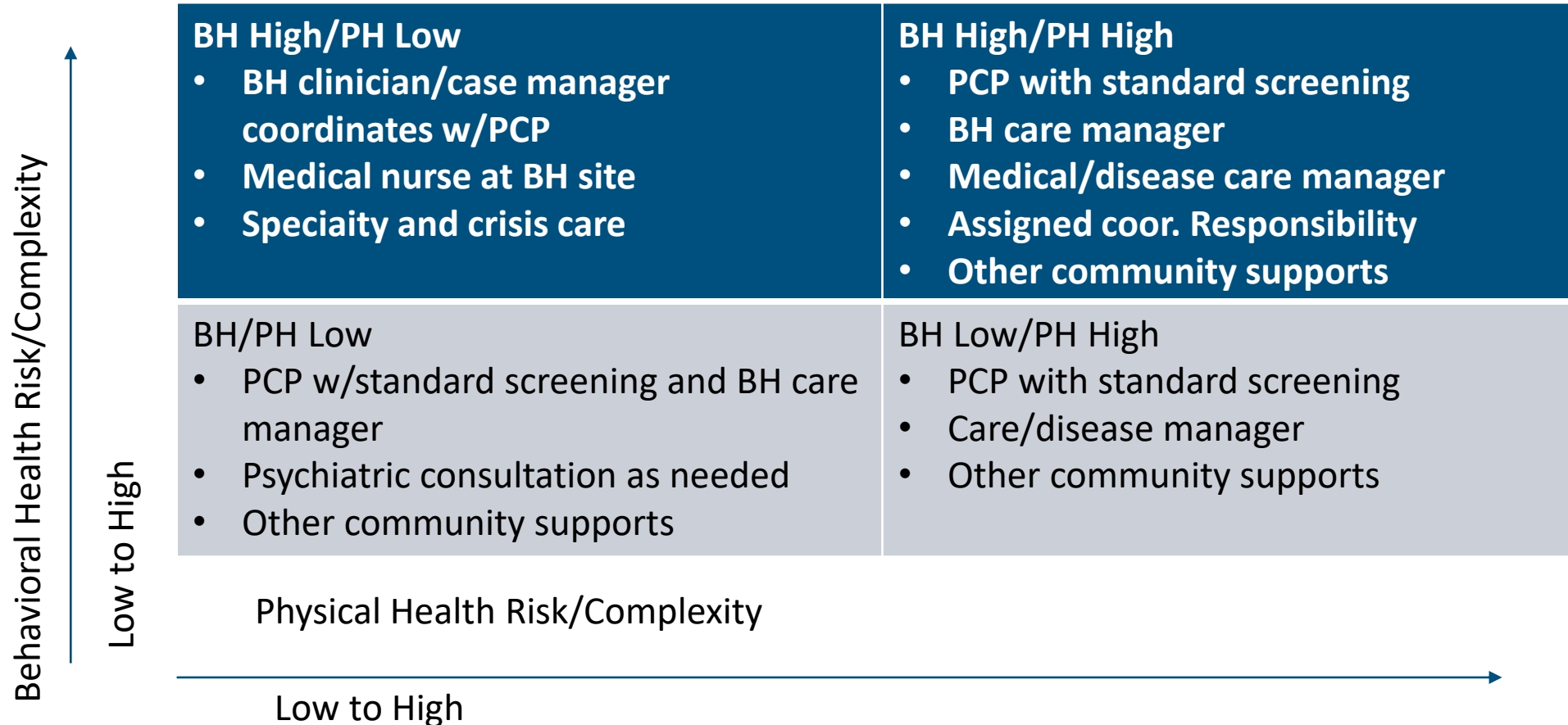
“Current data suggests that Collaborative Care may significantly improve patient outcomes and time-to-treatment in all reviewed settings, and successfully adapts to special patient populations.”

- ✓ Collaborative mental health care: A narrative review, Dec 30, 2022, Christopher Reist, MD, MBA,a,b Incia Petiwala, BS,c Jennifer Latimer, LCSW,c Sarah Borish Raffaelli, PhD,c Maurice Chiang, MS,corresponding authorc,* Daniel Eisenberg, PhD,d and Scott Campbell, MDe

Collaborative Care



Four Quadrant Clinical Integration Model



BH Screening Options SAW/RTW

- Depression
- Anxiety
- Bi-polar
- Post-traumatic stress disorder (PTSD)
- SUD

Patient Health Questionnaire (PHQ-9): The PHQ-9 is a validated screening tool focusing on symptoms of depression.

Generalized Anxiety Disorder (GAD-7): The GAD-7 is a validated screening tool and symptom severity measure focusing on the four most common anxiety disorders.

Alcohol Use Screening (AUDIT-C): The AUDIT-C is a validated screening tool focusing on symptoms of alcohol dependence.

Substance Abuse Screening (ASSIST): ASSIST is a brief screening tool that focuses on dependency related to alcohol, tobacco products and other drugs.

Group Discussion

Behavioral Health AND RETAIN

RETAIN | Retaining Employment and Talent After
Injury/Illness Network

Discussion Questions

- What BH Services are part of your RETAIN project?
- Do you consider these services health care, wraparound, or something else?
- How might we think and act differently with regards to behavioral health and RETAIN, to better support, serve and improve outcomes?
- What's next after RETAIN for BH services and SAW/RTW?

Thank you!

Beth Kuhn

beth@workfuturenow.com

RETAIN

Retaining Employment and Talent After
Injury/Illness Network